

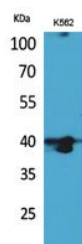


GPR87/95 Polyclonal Antibody

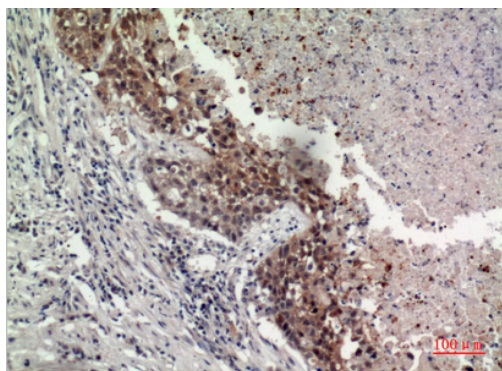
Catalog No	YP-Ab-13732
Isotype	IgG
Reactivity	Human;Rat;Mouse;
Applications	WB;IHC;IF;ELISA
Gene Name	GPR87
Protein Name	G-protein coupled receptor 87
Immunogen	The antiserum was produced against synthesized peptide derived from the N-terminal region of human GPR87. AA range:1-50
Specificity	GPR87/95 Polyclonal Antibody detects endogenous levels of GPR87/95 protein.
Formulation	Liquid in PBS containing 50% glycerol, 0.5% BSA and 0.02% sodium azide.
Source	Polyclonal, Rabbit,IgG
Purification	The antibody was affinity-purified from rabbit antiserum by affinity-chromatography using epitope-specific immunogen.
Dilution	WB: 1/500 - 1/2000. IHC-p: 1/100-1/300. ELISA: 1/20000.. IF 1:50-200
Concentration	1 mg/ml
Purity	≥90%
Storage Stability	-20°C/1 year
Synonyms	GPR87; GPR95; FKSG78; G-protein coupled receptor 87; G-protein coupled receptor 95
Observed Band	42kD
Cell Pathway	Cell membrane ; Multi-pass membrane protein .
Tissue Specificity	Expressed in placenta and prostate. Weaker expression in thymus. Not expressed in thalamus, hippocampus, pons or cerebellum. Overexpressed in squamous cell carcinoma of the lung.
Function	function:Orphan receptor.,similarity:Belongs to the G-protein coupled receptor 1 family.,tissue specificity:Expressed in placenta and prostate. Weaker expression in thymus. Not expressed in thalamus, hippocampus, pons or cerebellum.,
Background	This gene encodes a G protein-coupled receptor and is located in a cluster of G protein-couple receptor genes on chromosome 3. The encoded protein has been shown to be overexpressed in lung squamous cell carcinoma (PMID:18057535) and regulated by p53 (PMID:19602589). [provided by RefSeq, Nov 2011],
matters needing attention	Avoid repeated freezing and thawing!

**Usage suggestions**

This product can be used in immunological reaction related experiments. For more information, please consult technical personnel.

Products Images

Western Blot analysis of K562 cells using GPR87/95 Polyclonal Antibody. Secondary antibody(catalog#:RS0002) was diluted at 1:20000



Immunohistochemical analysis of paraffin-embedded human-lung, antibody was diluted at 1:100